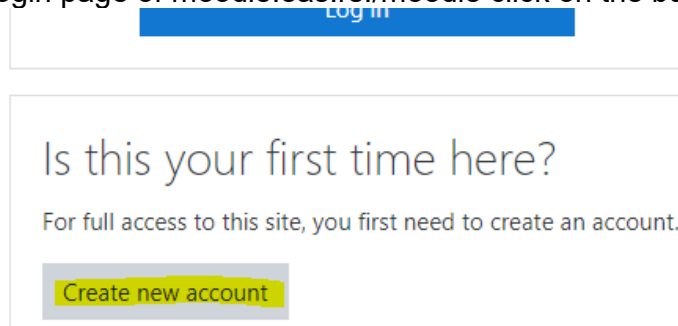


Creating a new user account at „EU Info Centar”

When you navigate to the moodle website “<http://moodle.eas.rs/moodle/>” and you are a new user to this eLearning website, you can create a new account by making the following steps:

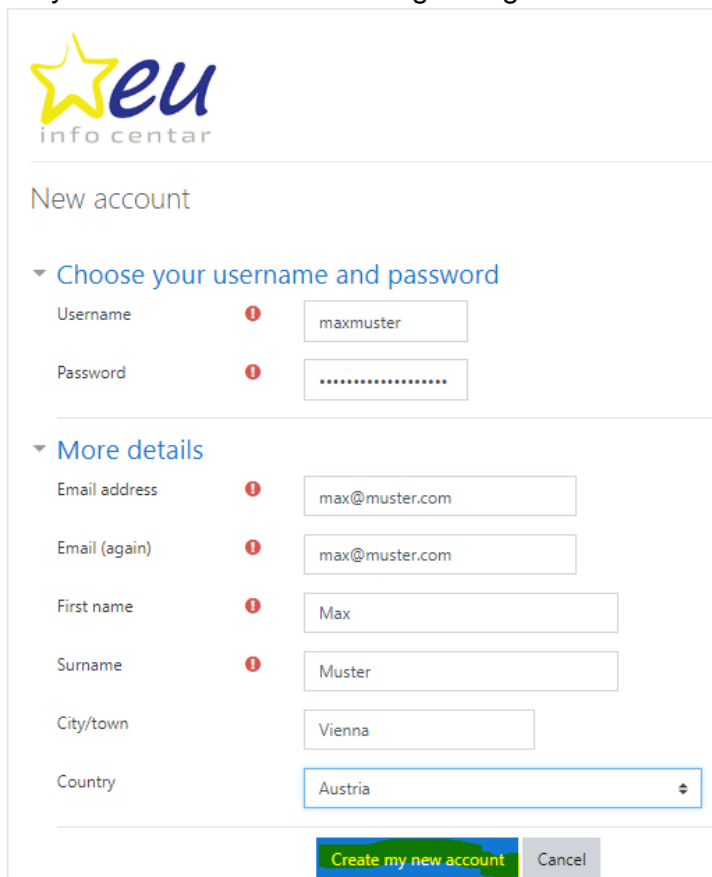
On the login page of moodle.eas.rs./moodle click on the button “Create new account”:



The screenshot shows the Moodle login page. At the top, there is a blue button labeled "Log in". Below it, the text "Is this your first time here?" is displayed, followed by the instruction "For full access to this site, you first need to create an account." At the bottom of this section, a yellow button labeled "Create new account" is highlighted.

You need to enter some information about your person:

Username (this one must be unique in the system), password (please choose a strong password with upper case letters and numbers), email address, first- and lastname, city and country like shown in the following dialogue:



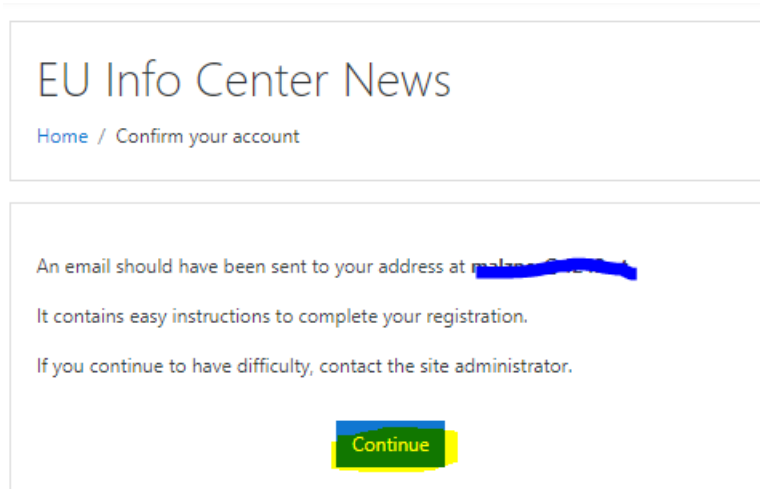
The screenshot shows the Moodle "New account" registration form. At the top left is the "eu info centar" logo. The form is titled "New account" and has two main sections: "Choose your username and password" and "More details".

- Choose your username and password:**
 - Username: maxmuster
 - Password:
- More details:**
 - Email address: max@muster.com
 - Email (again): max@muster.com
 - First name: Max
 - Surname: Muster
 - City/town: Vienna
 - Country: Austria

At the bottom of the form, there are two buttons: "Create my new account" (highlighted in green) and "Cancel".

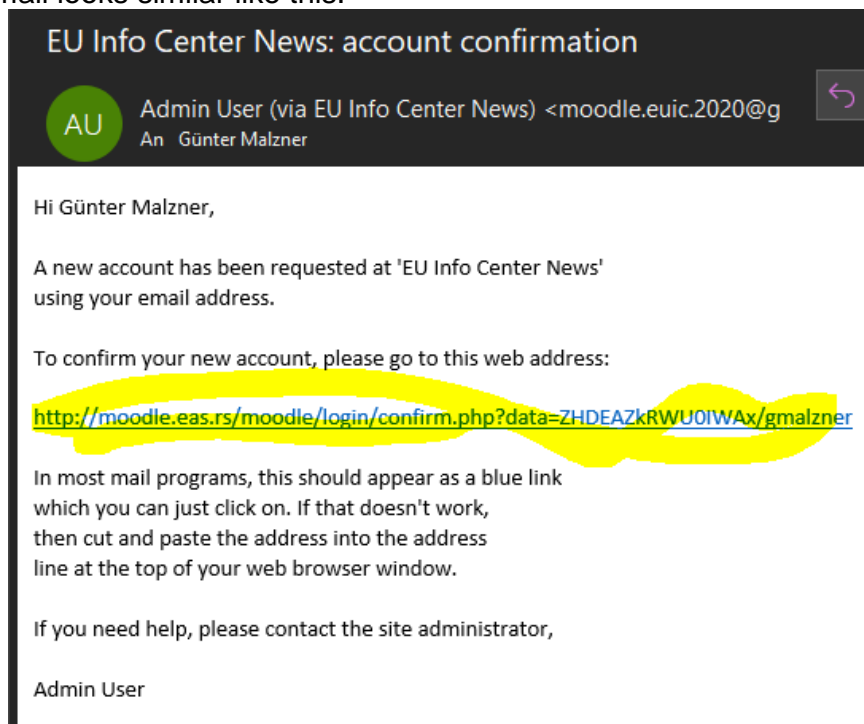
After you have entered all the necessary information, click on the button “Create my new account”.

You will receive the following dialogue:



Click on “Continue”. This means you will receive an email to the entered email address in the registration form.

The email looks similar like this:




Click on the confirmation link in the email to activate your account. Please note: It is possible to find this eMail in the Junk-Email or Spam-folder of your email program.

After that, you are ready to login to the eLearning system under

<http://moodle.eas.rs/moodle/>

Enter the user credentials you have entered above:



maxmuster

.....

Remember username

Log in

[Forgotten your username or password?](#)

Cookies must be enabled in your browser [?](#)

Is this your first time

You will land at the following page:

Now it is the time to enroll yourself in one or more courses of the eLearning system:

Dear interested parties, dear participants!

This e-learning platform has been developed for you with the support of the European Union Delegation in the Republic of Serbia, the Ministry of European Integration and the EU Info Centre. The platform is intended for all of those who need detailed information about existing EU programmes and a free online training for the preparation and implementation of projects by which they want to apply for one of the EU programmes available in Serbia.

There are 13 EU programmes currently available in Serbia and on this platform you can find all comprehensive information and links you need. Our mission is to make it easier for you to apply for one of these programmes, so the online platform represents an open and completely free of charge opportunity to obtain quality information about these EU programmes and additionally to acquire project writing skills.

Please explore this platform for comprehensive information about European Community activities at the section "EU-Programmes - Overview" or enter the sections "EU-Programmes in details" (Part 1 and 2 - see the grid on the left side).

Our service furthermore consists of an **free online training in Professional Project Development**, which may guide you for developing a successful project idea and for working out the application receiving EU support professionally.

We wish you success!

Available courses

[EU-Programmes - overview](#)

[EU-Programmes - in details \(Part 1\)](#)

[EU-Programmes - in details \(Part 2\)](#)

Please choose to enrol to the overview, details part 1 or details part 2:

Enrolment options

🔖 EU-Programmes - in details (Part 1)

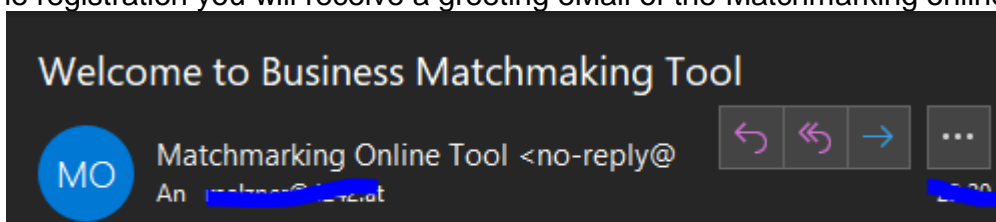
▼ EU-Programmes - in details (Part 1)!

No enrolment key required.

Enrol me

Click on the button “Enrol me” and you are done!

After the registration you will receive a greeting eMail of the Matchmaking onlinetool:



Welcome to Business Matchmaking Tool!
Thank you for your interest.

To complete registration, please visit and follow instruction at
<https://mt.euinfo.rs/init/account/YrvDnGveynoVLOxKiwYAG1Q5o5U2e8kS1CCIdWMwkm>

Podrška učestvovanju u EU programima
<http://eu-programmes.euinfo.rs/>

Feel free to visit the instructions or the complete information about the program.

In future you can login every time you want to the eLearning system under
<http://moodle.eas.rs/moodle> with your user credentials.

We wish you every success with your education!